

SPRING TR-7000 Smart Thermostat

WIFI Type



For Water Heating/Boiler/Electric Heating

New heating thermostat with knob TR-7000 Six characteristics on the design

- *1.32 inch circular and 240*240 TFT shows your artistic taste.
- *Superfine aluminum side knob lets your fingers feel delicate.
- *Above 6H tempered glass keeps your screen away from scratches.
- *Agile push button gives you an excellent experience.
- *Seven colors ambient light increase color to your life.
- *Variety brushed back panel options are suitable for different home styles.

ABOUT YOUR THERMOSTATS

The TR-7000 range has been developed to control electric underfloor, water heating or water/ gas boiler systems. These units are designed for use in commercial, industrial, civil and domestic properties

MODEL DEFINITION

TR7000 - Water heating, 5A
 TR7000-1 Electric floor Heating, 16A
 TR7000-2 Water/Gas Boiler, 5A
 L: Backlight
 N: Modbus Communication
 W: Wifi
 S2: Both internal sensor and floor external sensor
 For example: TR-7000

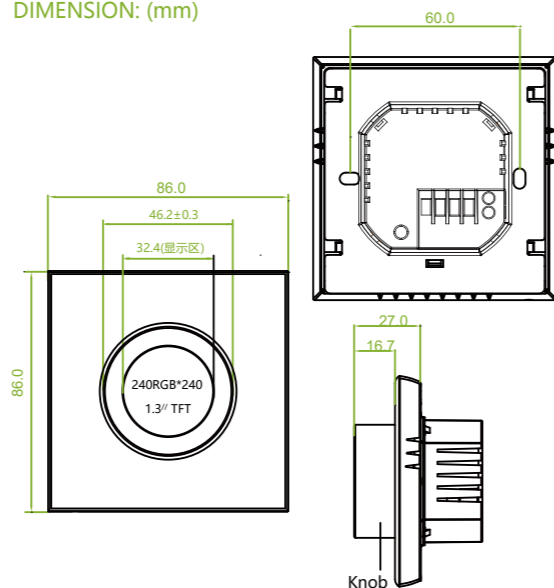
In the box you will find

Thermostat	1pc	Screws	2pc
User Guide	1pc	Wall plate	1pc
QC Passed	1pc	(Floor sensor is Optional)	

TECHNICAL DATA

Power Supply: 95 ~240 VAC, 50~60Hz or 24V DC/AC, 50~60Hz
Please check the information laser printed on the back of the thermostat for the actual voltage.
 Current Load: 5A (water heating, gas boiler), 16A (electric heating)
 Sensor: NTC3950, 10K
 Accuracy: ±1°C
 Set Temp. Range: 5-35°C
 Room Temp. Range: 5-99°C
 Display Temp. Range: 5 ~ 99°C
 Ambient Temp.: 0~ 45°C
 Ambient Humidity: 5 ~ 95 % RH (Non Condensing)
 Storage Temp.: 0~ 45°C
 Power Consumption: < 1.5W
 Timing Error: < 1%
 Shell Material: PC +ABS (Fireproof)
 Installation Box: 86 * 86mm Square or European 60mm Round Box
 Wire Terminals: Wire 2 x 1.5 mm2 or 1 x 2.5 mm2
 Protection Class: IP20

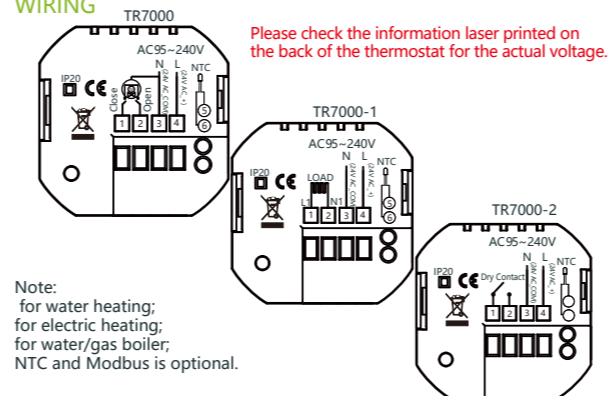
DIMENSION: (mm)



BEFORE WIRING AND INSTALL

1. Read these instructions carefully. Failure to follow them could damage the product or cause a hazardous condition.
2. Check the ratings given in the instructions and on the product to make sure the product is suitable for your application.
3. Installer must be a trained, experienced service technician.
4. After installation is complete, check out product operation as provided in these instructions.

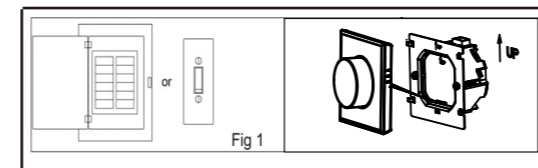
WIRING



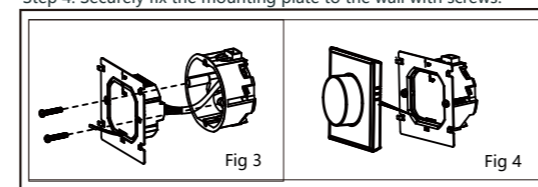
INSTALLATION

Your thermostat is suitable for installation within a standard 86mm pattriss box or European 60mm pattriss box.

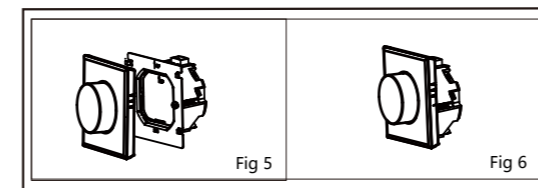
- Step 1. Keep power off. See Fig 1.
- Step 2. Remove the mounting plate by pushing the assembly. See Fig 2.



- Step 3. Connect the power supply and load it into the appropriate terminals. (See "Wiring your thermostat" for details and Figure 3).
- Step 4. Securely fix the mounting plate to the wall with screws.

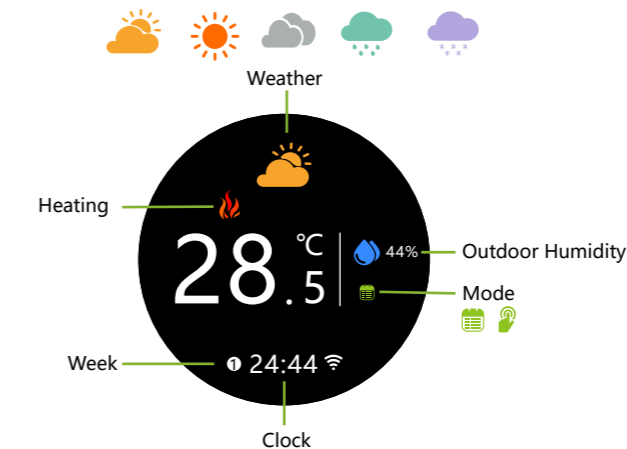


- Step 5. Fasten body of thermostat and the mounting plate through rotating. See Fig 5.
- Step 6. Installation complete. See Fig 6.



Electrical Shock or Equipment Damage Hazard. Can shock individuals or short equipment circuitry.
 Disconnect power supply before installation.

HOME SCREEN QUICK REFERENCE



Note: The weather and humidity will be synchronized within 1 hour after the device is connected to the Internet for the first time, and the weather will be synchronized every hour thereafter.

Main control interface



Tip: Press the screen to enter the Main control interface.

OPERATION

During Power On

1. Press the home screen to enter the control interface.
2. Rotate the control interface to select
3. Press the control interface to confirm
4. Long press the control interface to return the home screen

1. Power
 ON: The thermostat is controlling the heating device.
 OFF: The thermostat stops controlling the heating device.
2. Sensor types
 In: Internal Sensor(to control the temp.)
 Ou: External Sensor(to control the temp.)
 AL: Internal/External Sensor (Internal sensor to control the temp., external sensor to limit the temp.)
3. Clock
 Clock setting, the wifi version will automatically synchronize the local time after networking.
4. Brightness
 Standby screen brightness setting. When it is set to 0, the screen will be off after 10s of no operation without displaying anything, and the screen will be woken up by rotating the knob.
5. Mode
 Manual Mode Programming mode (Schedule mode.)
6. WiFi
 ON: The thermostat is in the wifi distribution network state.
 OFF: The thermostat is not in the wifi distribution network state.
7. Temp calibration
 Please perform temperature correction after the thermostat has been working for 30 minutes.
8. Set temp.
 Set temperature range 5~45°C

Set week program on your App

Default settings for program schedule

Time display	WEEKDAY (MONDAY—FRIDAY) (1 2 3 4 5 shows on screen)		WEEKEND (SATURDAY) (6 shows on screen)		WEEKEND (SUNDAY) (7 shows on screen)	
	TIME	TEMPERATURE	TIME	TEMPERATURE	TIME	TEMPERATURE
Period 1	06:00	20 °C	06:00	20 °C	06:00	20 °C
Period 2	08:00	15 °C	08:00	20 °C	08:00	20 °C
Period 3	11:30	15 °C	11:30	20 °C	11:30	20 °C
Period 4	13:30	15 °C	13:30	20 °C	13:30	20 °C
Period 5(1+2)	17:00	22 °C	17:00	20 °C	17:00	20 °C
Period 6(3+4)	22:00	15 °C	22:00	15 °C	22:00	15 °C

A separate schedule may be set for weekdays (Mon – Fri) and for weekends (Sat or Sun).

ABOUT WIFI

WI-FI CONNECTION

Before using your Wi-Fi thermostat for the first time, you must configure the Wi-Fi signal and settings using your smartphone or tablet. This enables communication between your devices.

Step 1 Download your APP (Fig1-1)



Fig 1-1



Fig 1-2 IOS



Fig 1-3 Android

Search for "Smartlife" in Apple Store or Google Play or use a browser to scan the QR code above (Figure 1-2), and complete account registration and installation according to the guidance of the APP.

Step 2. Connect the thermostat

Method 1: Bluetooth network distribution (Fig 2.1-Fig 2.4), turn on the Bluetooth switch of the mobile phone and set the thermostat to the WiFi enabled state, see the following tutorial to complete the connection and settings.



Setting wifi to ON means the thermostat is in wifi pairing state.



The wifi icon blinks quickly

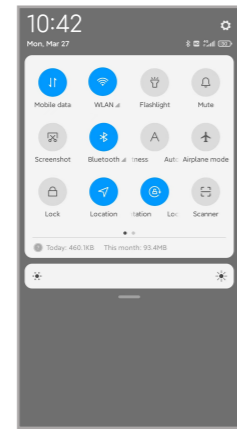


Fig2.1

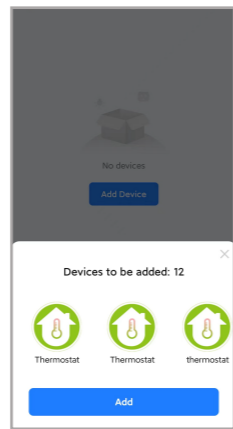


Fig2.2

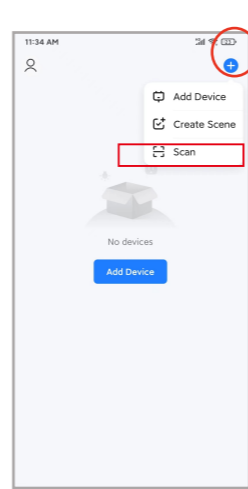


Fig2.5

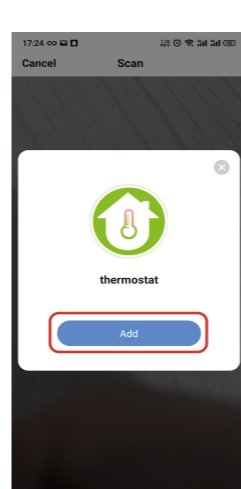


Fig2.6

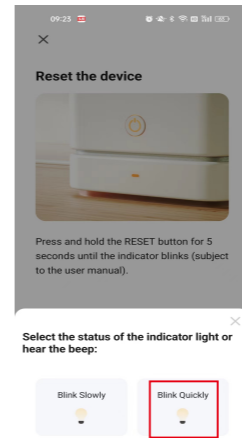


Fig2.7

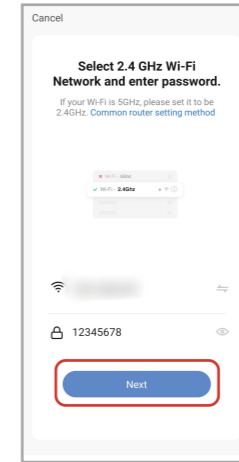


Fig2.8

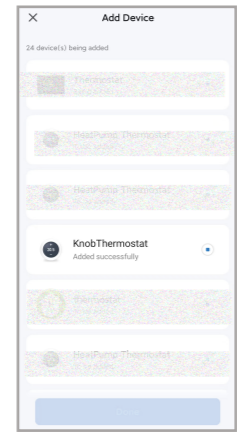


Fig2.3

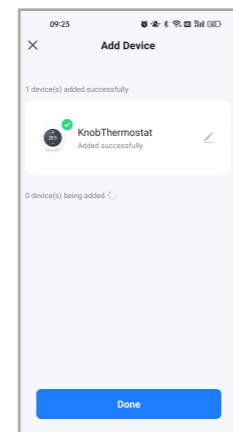
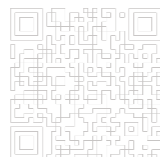


Fig2.4

Method 2: Scan the QR code to configure the network guide (Fig 2.5-Fig 2.9) complete the connection and setup



Scan this QR code

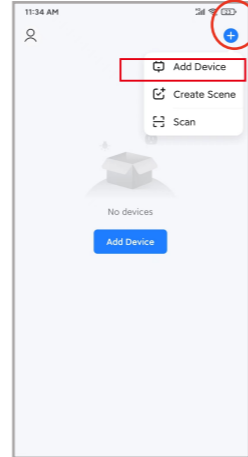


Fig2.5.1

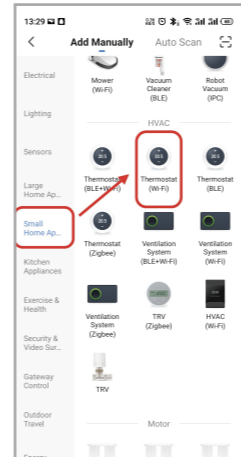


Fig2.6.1

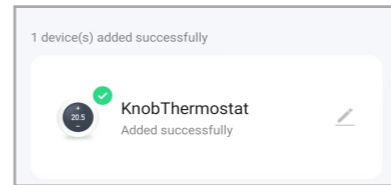
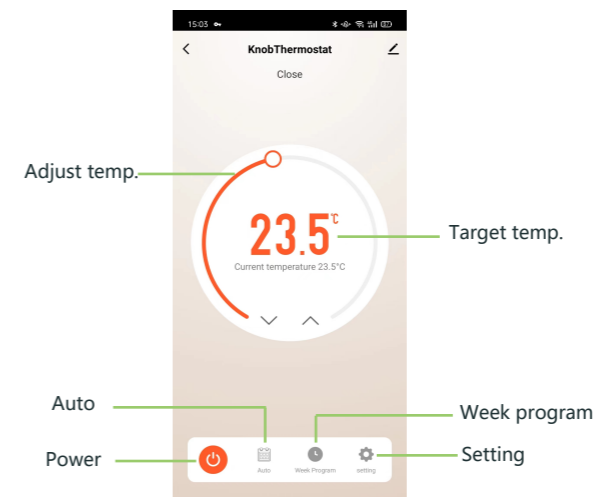
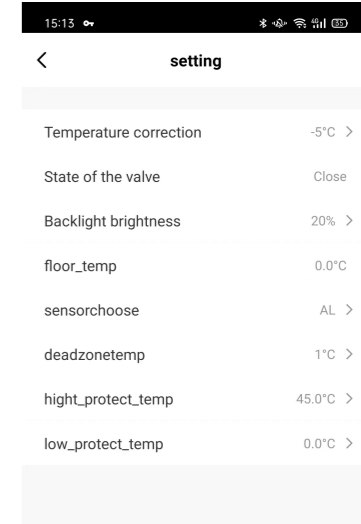


Fig2.9

APP operation interface description (heating thermostat)



More settings



SIMPLE EXCEPTION HANDLING

No.	Phenomenons	Handling
1	Power is on but without display.	*Check if the terminals between LCD panel and Power Unit Box is loosen.
2	Without output but display works.	* Use a new LC panel or new Power Unit Box to replace the old one.
3	Room Temp. Is a little different from the actual.	* Do temperature calibration in item 1 of high senior options

SERVICE

Your thermostat carries an 24 months warranty from date of purchase. Service out with the warranty period may incur a charge. More detail please contact with us directly.